



LILY 3
IP65 LED DOWNLIGHTER

IP65 

Installation instructions

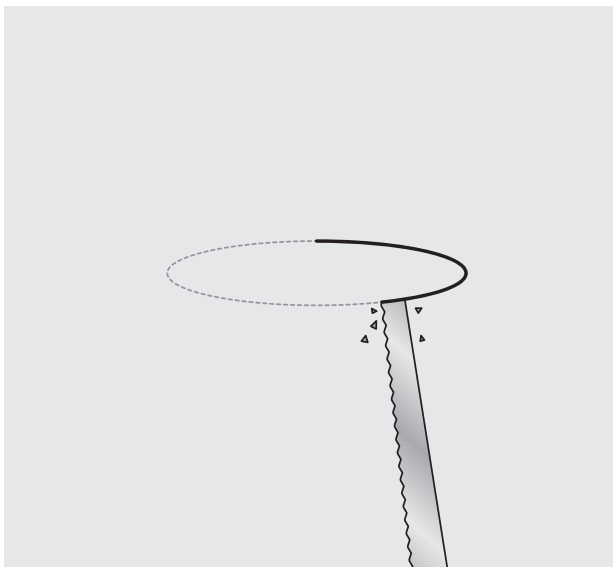


Innovation.
Collaboration.
Illumination.

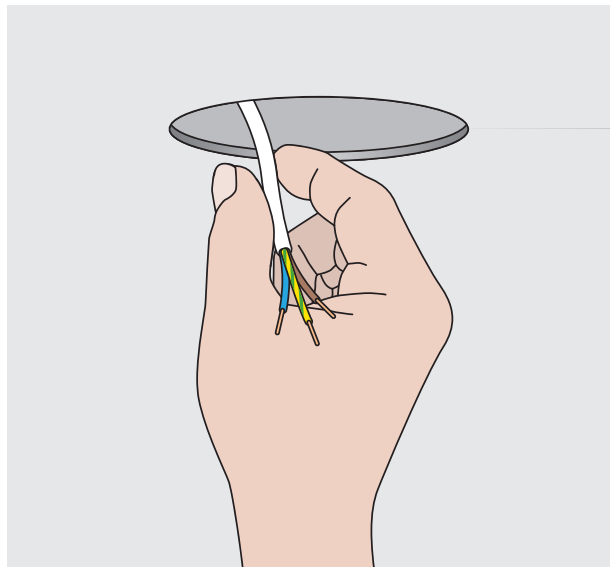
LILY 3 - IP65 LED DOWNLIGHTER

Installation instructions

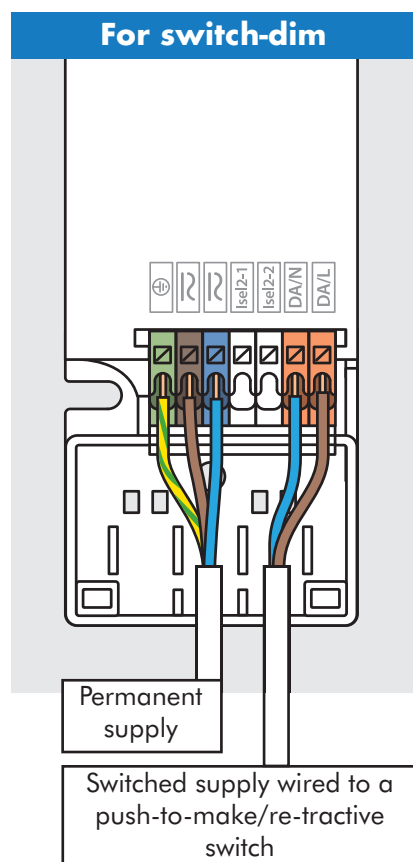
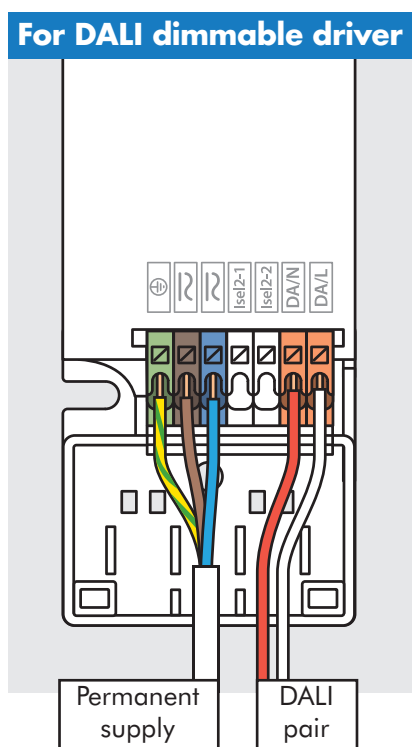
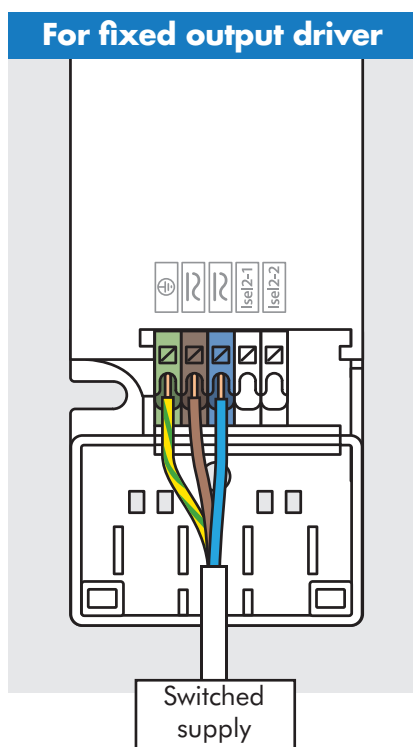
IP65 



Cut Ø64mm hole in the ceiling.



Pull the cable through the hole and connect to the driver.



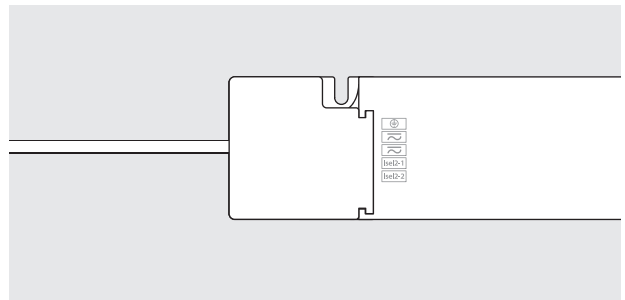
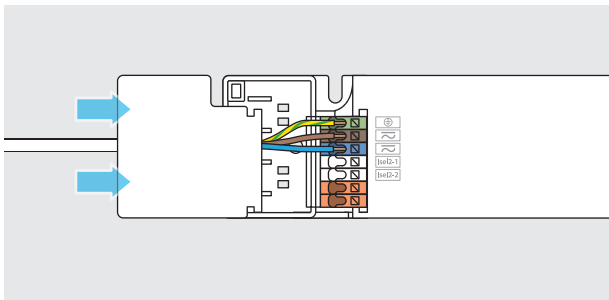
Innovation.
Collaboration.
Illumination.



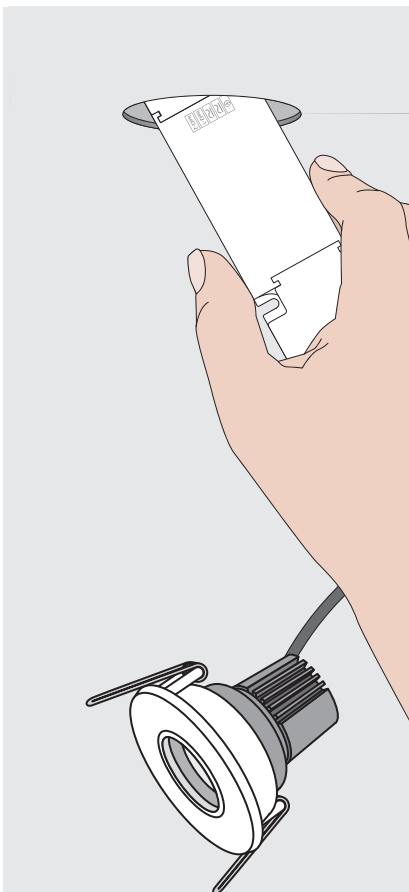
LILY 3 - IP65 LED DOWNLIGHTER

Installation instructions

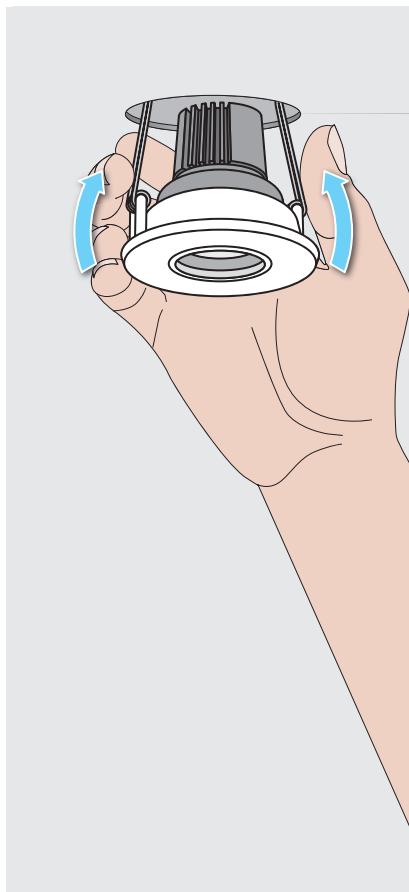
IP65   



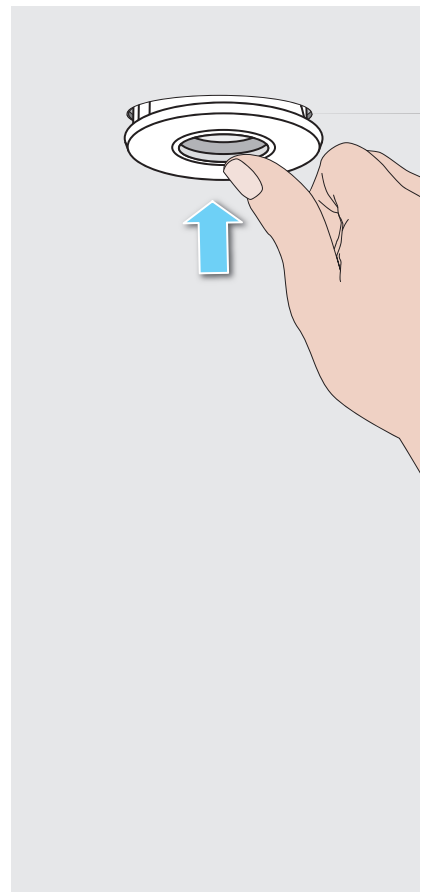
Clip on any strain relief clips and terminal cover/lid.



Insert the driver and the back of the downlight through the Ø64mm hole.



Squeeze springs upwards and push in to the ceiling.



Push Lily 3 until fully installed.

Innovation.
Collaboration.
Illumination.

