



DARCEY LED DOWNLIGHTER

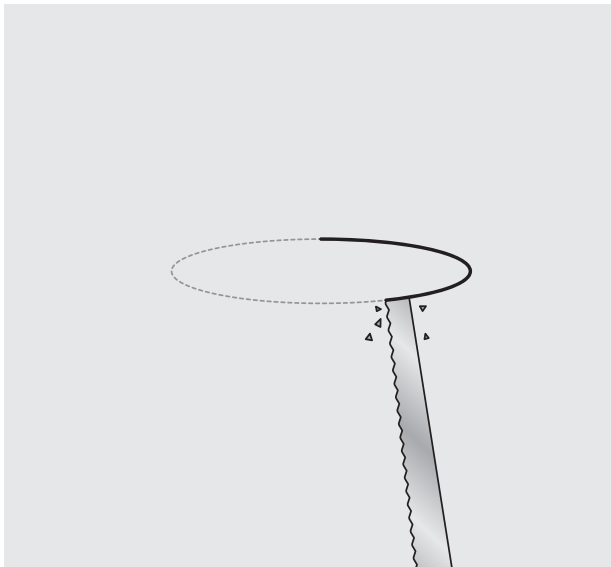
Installation instructions



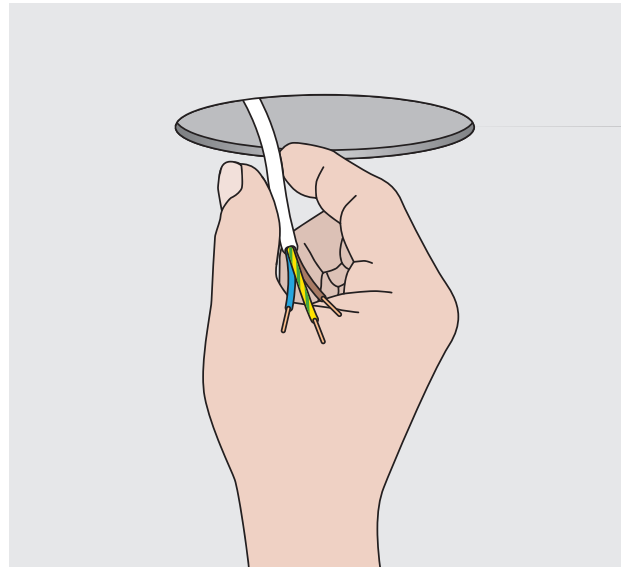
**Innovation.
Collaboration.
Illumination.**

ELLIE - LED DOWNLIGHTER

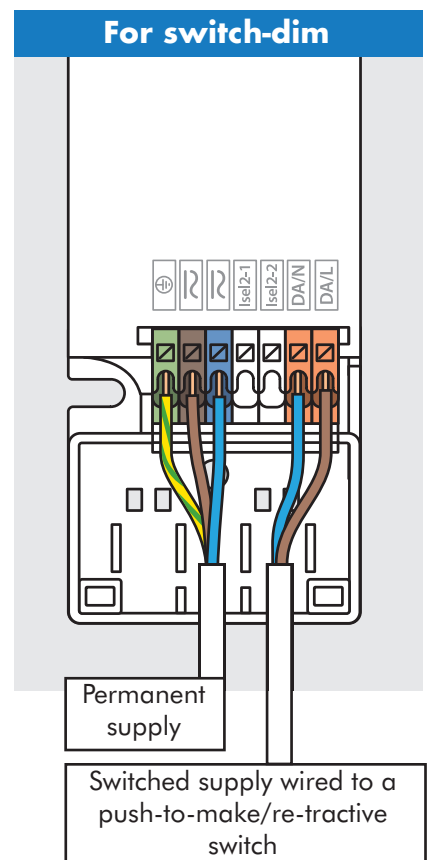
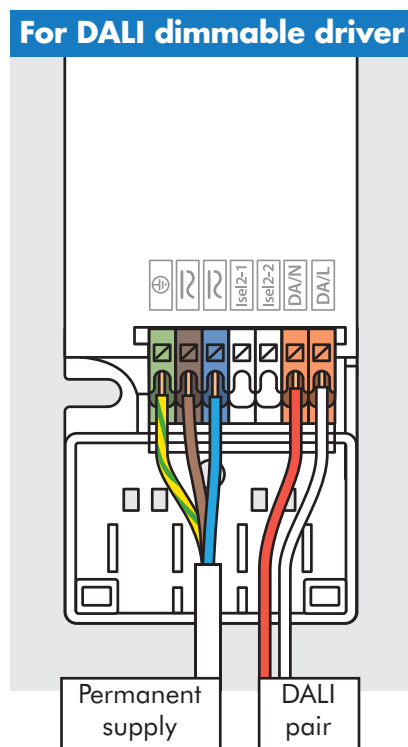
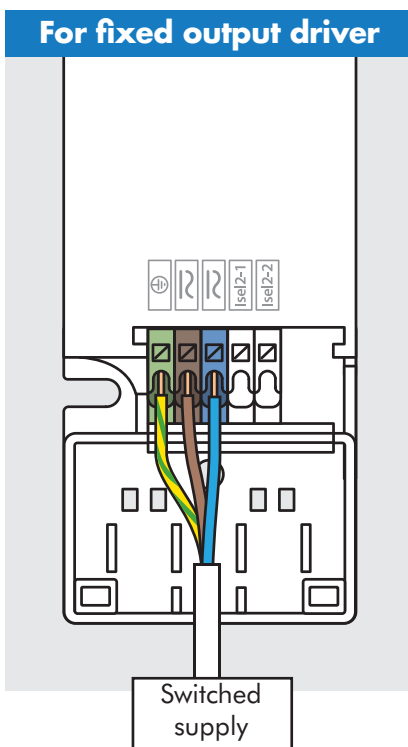
Installation instructions



Cut Ø68mm hole in the ceiling.

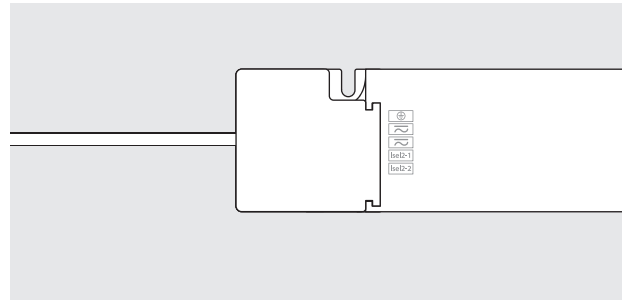
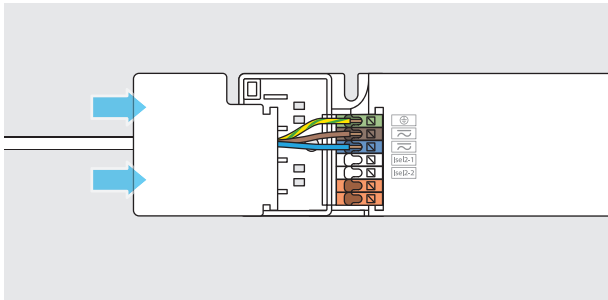


Pull the cable through the hole and connect to the driver.

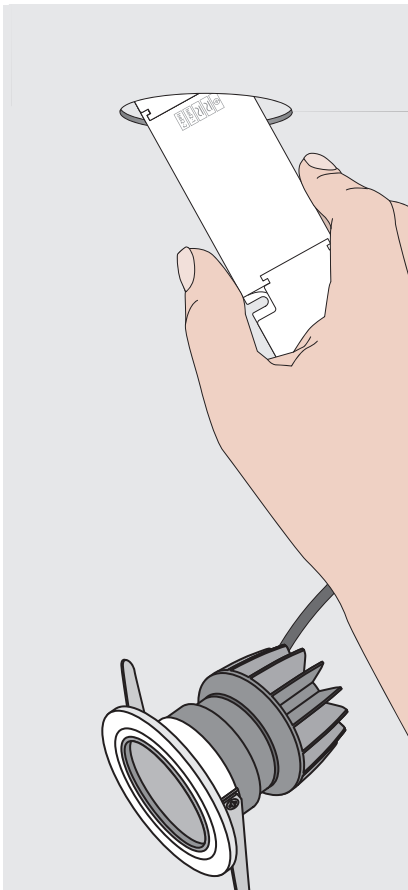


ELLIE - LED DOWNLIGHTER

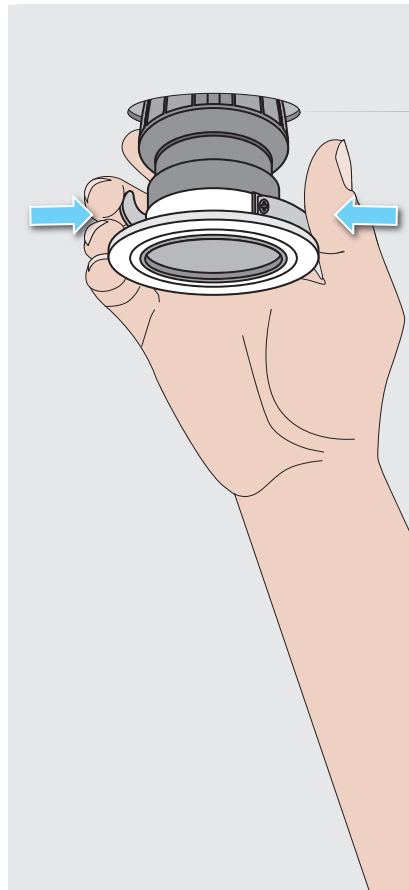
Installation instructions



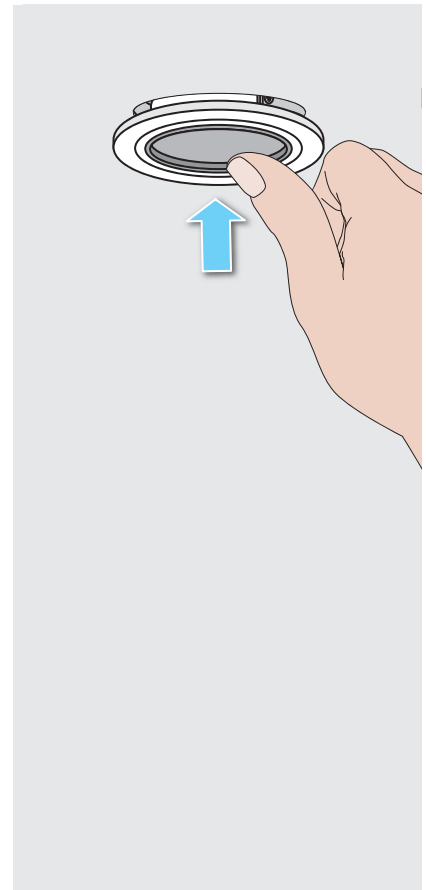
Clip on any strain relief clips and terminal cover/lid.



Insert the driver and the back of the downlight through the Ø68mm hole.



Squeeze springs together and push in to the ceiling.



Push Darcey until fully installed.

Innovation.
Collaboration.
Illumination.

