



## **LILY 2** ADJUSTABLE LED DOWNLIGHTER

### **Installation instructions**

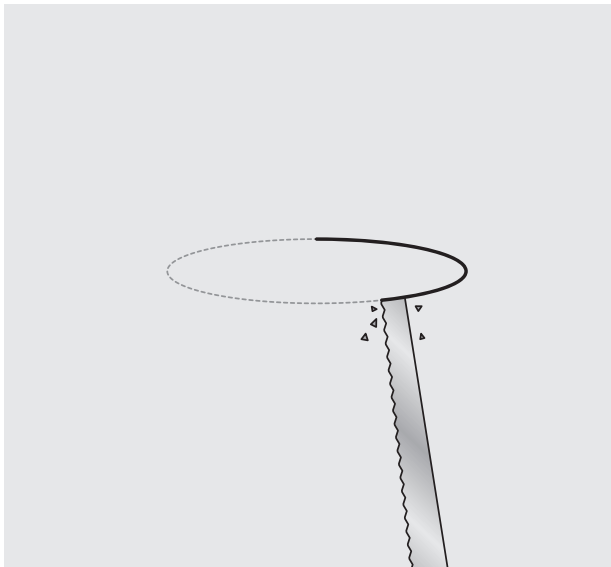
---



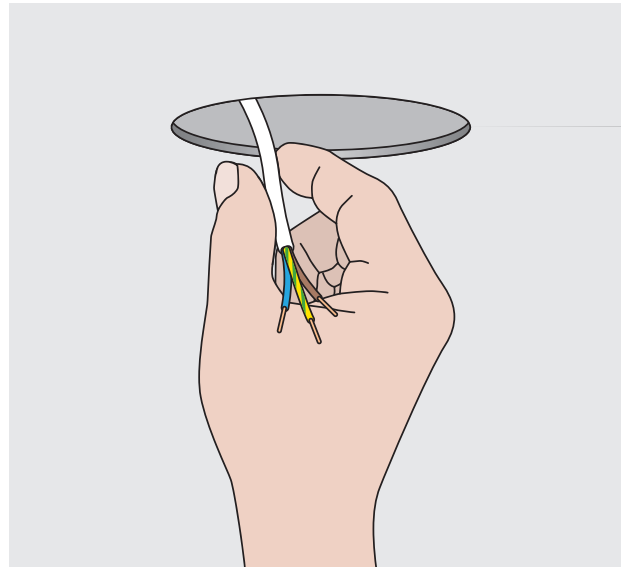
**Innovation.**  
**Collaboration.**  
**Illumination.**

## LILY 2 - ADJUSTABLE LED DOWNLIGHTER

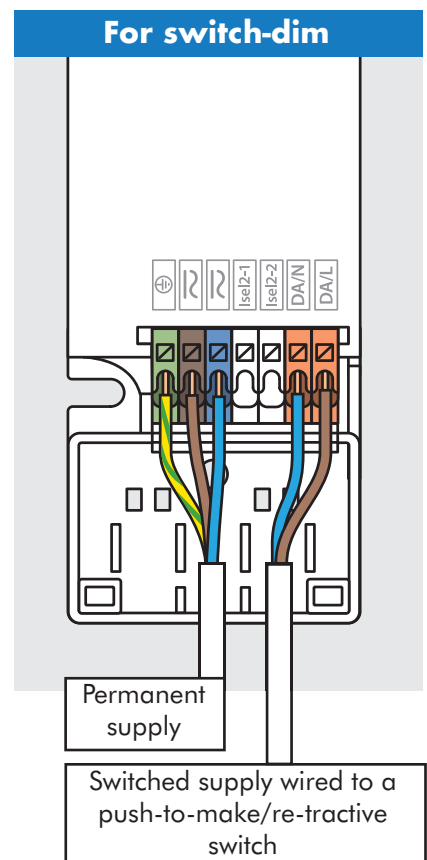
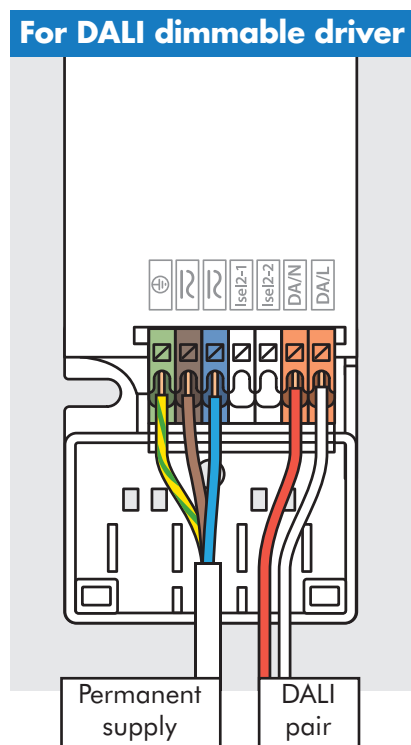
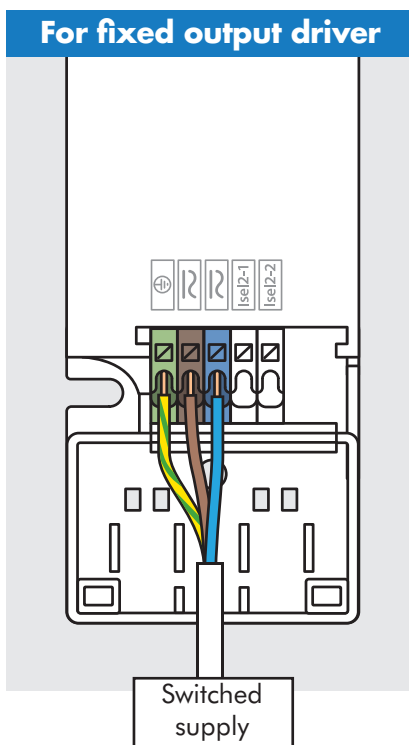
### Installation instructions



Cut Ø82mm hole in the ceiling.

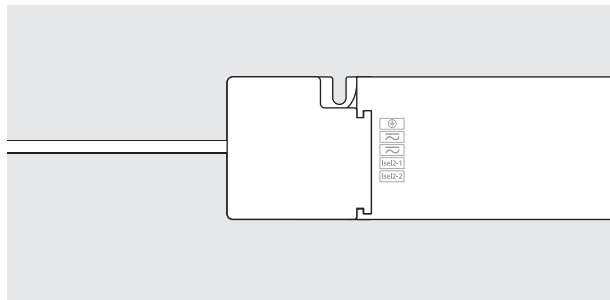
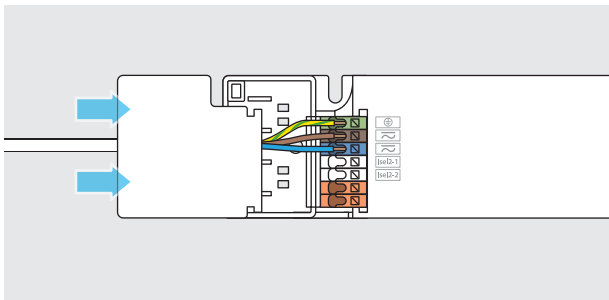


Pull the cable through the hole and connect to the driver.

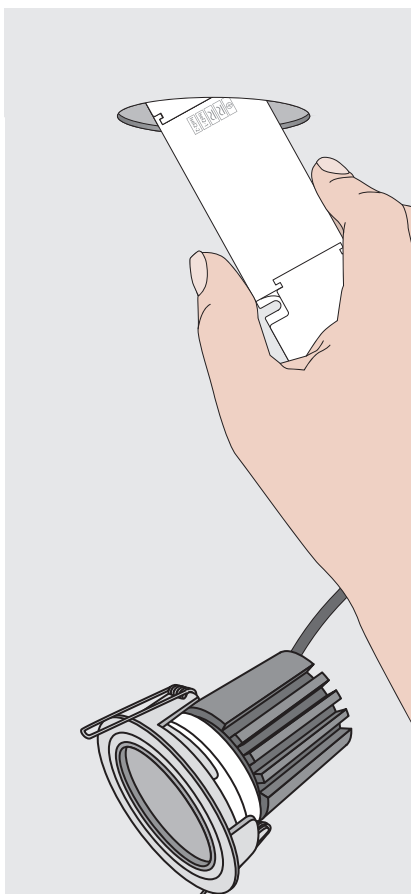


## LILY 2 - ADJUSTABLE LED DOWNLIGHTER

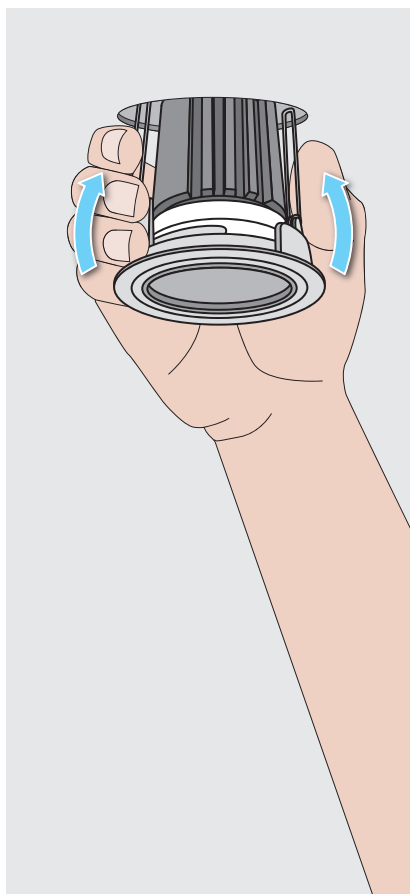
### Installation instructions



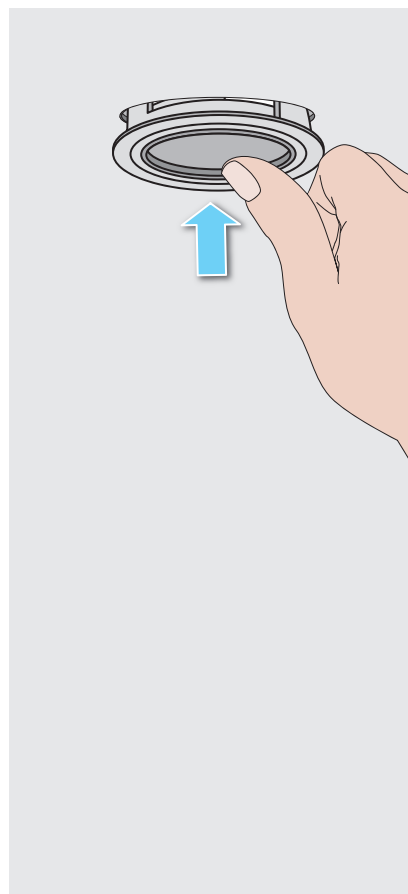
Clip on any strain relief clips and terminal cover/lid.



Insert the driver and the back of the downlight through the Ø82mm hole.



Squeeze springs upwards and push in to the ceiling.



Push Lily 2 until fully installed.

Innovation.  
Collaboration.  
Illumination.

